

NE 1/4
SECTION 9, T.6N., R.2W, S.L.B. & M.

IN MARRIOTT-SLATERVILLE CITY & WEBER COUNTY

TAXING UNITS: 16, 53, 361

SCALE 1" = 200'

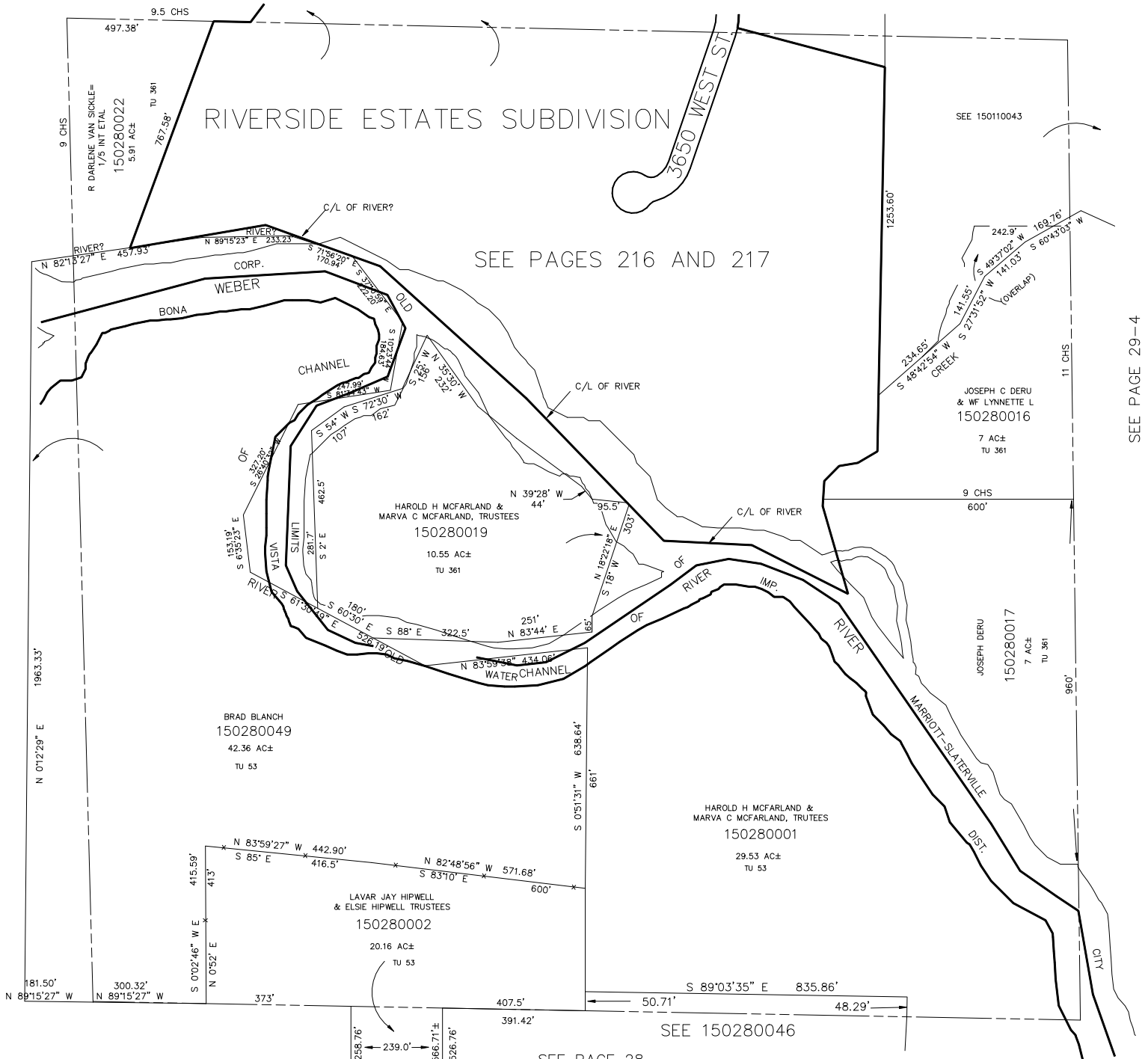
SEE PAGE 11

RIVERSIDE ESTATES SUBDIVISION

SEE PAGES 216 AND 217

SEE PAGE 28

SEE PAGE 29-4



SEE PAGE 28